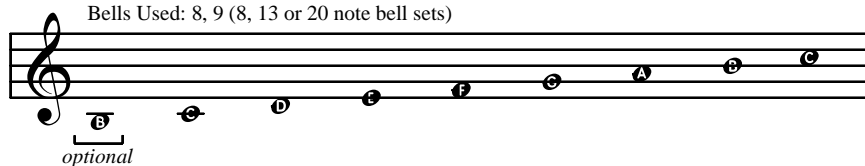


Deck the Halls #1

Bells Used: 8, 9 (8, 13 or 20 note bell sets)



CHORDS: Group ①: C, E, G; Group ②: F, A, C; Group ③: G, B, D; Group ④: D, F#, A.

Trad. Welsh
Arr. (Nelson) Sylvester

1 ① 2 3 ③ ①

Deck the halls with boughs of hol - ly, la la la la, la
Tis the sea - son to be jol - ly,

4 ③ ① 5 ③ ① ③

la la la Don we now our gay ap - par - el,

7 ① 8 ④ ③ 9 ①

Fa la la, la la la, la la. Troll the an - cient

10 11 ① 12 ③ ①

Yule - tide car - ol, Fa la la la la, la la la la.

*8 note bell sets omit F#.

() = alternate notes for 8 & 13 note bell sets.

See the blazing Yule before us.
Strike the harp and join the chorus.
Follow me in merry measure,
While I tell of Yuletide treasure.

Fast away the old year passes.
Hail the new ye lads and lasses.
Sing we joyous all together.
Hedless of the wind and weather.

Answer "dress up" for "Deck the Halls":

(Requires 2 sets of 8, 13 or 20 note bells, one for melody and one for chord groups.)

Split children ringing chords into 4 groups as above.

Chord ringers may "thumb damp" the bells, and play on every beat when it is their turn.

For additional variety, have children that are ringing chords wear wrist sleigh bells.

Deck the Halls #2

Bells Used: 8, 9, 12 (8, 13 or 20 note bell sets)

optional optional optional

Accompaniment patterns for practice:

Trad. Welsh

Arr. Susan T. (Nelson) Sylvester

TD

1 2 3 4 5 6 7 8 9 10 11 12

(8 note choir (play ♯))

*Alternate note for 8 and 13 note bell sets.

Deck the Halls #3

Bells Used: 8, 9, 12 (8, 13 or 20 note bell sets)

A musical staff in treble clef showing a sequence of notes: B, C, D, E, F, G, A, B, C, D, E. Brackets under the notes indicate optional groupings: one bracket under B and C, another under F and G, and a third under the final D and E.

Accompaniment patterns for practice:

A musical staff in treble clef with a 'TD' marking at the beginning. It contains a series of rhythmic patterns for practice, primarily consisting of eighth and sixteenth notes with stems pointing up.

Trad. Welsh
Arr. Susan T. (Nelson) Sylvester

The main musical score for 'Deck the Halls #3' is presented in 4/4 time. It begins with a 'TD' marking. The score is divided into measures numbered 1 through 12. Measures 1-3 show a melody line with stems pointing up and a bass line with stems pointing down. Measures 4-12 continue the melody and bass line, with measure 11 featuring a sequence of notes labeled 'A' and 'A'.